



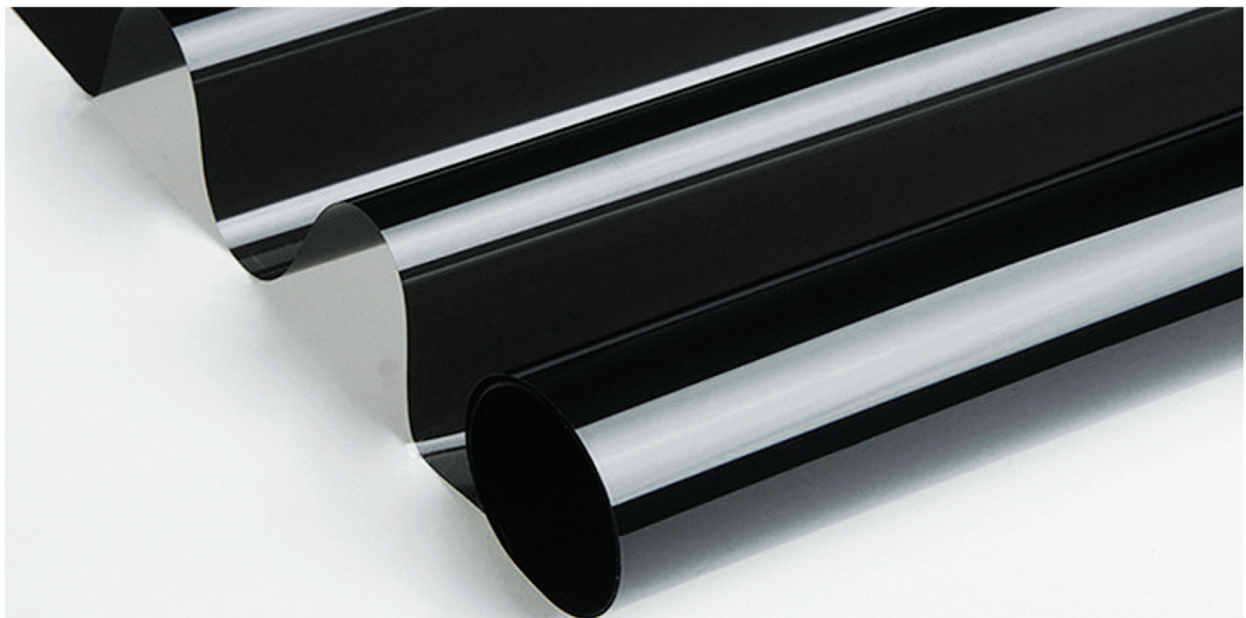
创·造不止 精·彩无限
More than colors for resins

BRILLIANT Piano Black Dye

**HIGH COLOR STRENGTH
AND TRANSPARENCY!**

**EXCELLENT FASTNESS
AND RESISTANCE!**

FEW DUST!



Presol Black 38

Black Solvent Dye for Plastic Applications

Technical Data Sheet

Version: 3.0.1 Rev. Date: 05/12 / 2022

PRODUCT DESCRIPTION

Color Name	Presol Black 38
C.I. No.	N/A
CAS No.	N/A
EC No.	N/A
Chemical Type	N/A
Chemical Formula	N/A

FULL SHADE



REDUCTION (1:10 TiO₂)



PRODUCT PROFILE

Presol Black 38 is a mixed black solvent dye with bluish shade. It has good tinting strength, excellent light fastness and heat fastness. It is applied to the coloring of styrenic engineering plastics. The performance of Presol Black 38 used in polyester fiber is excellent, including light fastness, wash fastness, rubbing fastness etc.

STRUCTURAL FORMULA

N/A

PHYSICAL DATA

Appearance	Dark Powder
Density [g/cm ³]	1.35
Bulk Volume [kg/m ³]	300

APPLICATION PROFILE

PS	●	SB	●	ABS	●
SAN	●	PMMA	●	PC	●
PVC-U	●	PPO	-	PET	●
POM	○	PA6/66	x	PBT	○
PES	-				

● = recommended ○ = limited use x = not recommended

FASTNESS PROPERTIES

Migration [PS]	5
Light Fastness [1/3 SD] [PS]	7~8
Heat Resistance [°C] [1/3 SD][PS]	300

STANDARD PACKAGING

25kg Bags/Cartron/Drum

Different types of packaging are available on request

The data given in this file is based on the present state of our knowledge and experience. Customers are allowed to make your own tests and assessments because of many possible factors which can affect the result and performance of our products in practical application. A legal liability for any of the properties or suitability for a specific usage can't be concluded from data. It is the buyer's responsibility to ensure that complies with all relevant legislations, regulations and prescription both in use of our products and subsequent application. All the data are based on our own tests and comparison between different pigments.



PRECISE COLOR NINGBO PRECISE NEW MATERIAL TECHNOLOGY CO., LTD.

Presol Black 41

Black Solvent Dye for Plastic Applications

Technical Data Sheet

Version: 3.0.1 Rev. Date: 05/12 / 2022

PRODUCT DESCRIPTION

Color Name	Presol Black 41
C.I. No.	N/A
CAS No.	N/A
EC No.	N/A
Chemical Type	N/A
Chemical Formula	N/A

FULL SHADE



REDUCTION (1:10 TiO2)



PRODUCT PROFILE

Presol Black 41 is a mixed black solvent dye with bluish shade. The advantage of this product is it gives a transparent, glossy, and strong black color that can be applied for many carriers. It has good tinting strength, excellent light fastness and heat fastness. It is applied to the coloring of styrenic engineering plastics. The performance of Presol Black 41 used in polyester fiber is excellent, including light fastness, wash fastness, rubbing fastness etc.

STRUCTURAL FORMULA

N/A

PHYSICAL DATA

Appearance	Dark Powder
Density [g/cm ³]	1.35
Bulk Volume [kg/m ³]	300

APPLICATION PROFILE

PS	●	SB	●	ABS	●
SAN	●	PMMA	●	PC	●
PVC-U	●	PPO	-	PET	●
POM	●	PA6/66	x	PBT	●
PES	-				

● = recommended ○ = limited use x = not recommended

FASTNESS PROPERTIES

Migration [PS]	5
Light Fastness [1/3 SD] [PS]	7~8
Heat Resistance [°C] [1/3 SD][PS]	300

STANDARD PACKAGING

25kg Bags/Cartron/Drum

Different types of packaging are available on request

The data given in this file is based on the present state of our knowledge and experience. Customers are allowed to make your own tests and assessments because of many possible factors which can affect the result and performance of our products in practical application. A legal liability for any of the properties or suitability for a specific usage can't be concluded from data. It is the buyer's responsibility to ensure that complies with all relevant legislations, regulations and prescription both in use of our products and subsequent application. All the data are based on our own tests and comparison between different pigments.



PRECISE COLOR NINGBO PRECISE NEW MATERIAL TECHNOLOGY CO., LTD.



Material Test and Evaluation Report

Report No.: NBSC10090

Report Date: Aug. 28, 2022

Material Classification

<input type="checkbox"/>	Pigment	<input type="checkbox"/>	Resin
<input checked="" type="checkbox"/>	Solvent Dye	<input type="checkbox"/>	Additive

Material Info.

Product Name Presol Black 38	Lot. No. 220818
-------------------------------------	------------------------

Color Evaluation

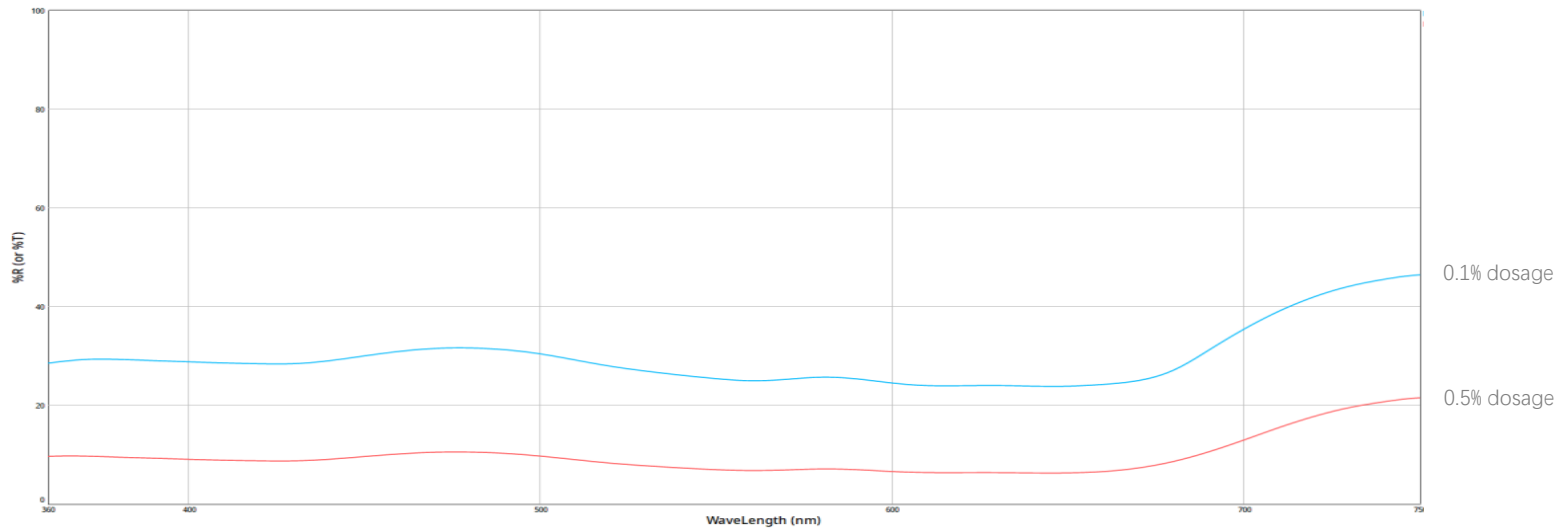
Product Name	Dosage %	Fiber Specification	Resin	Type	L	a	b	C	h
Presol Black 38	0.1	300D/96f	RPET-006A1	Filament yarn	58.62	-2.73	-5.30	5.96	242.74
Presol Black 38	0.5	300D/96f	RPET-006A1	Filament yarn	33.38	-2.90	-6.72	7.32	246.64

客户名称: Customer	宁波恩创	色号: Color No	
适用原料: Raw Material	PET有光	样品规格: D/F Spec	300/96
产品名称: Product Name	溶剂黑38	参考配比: Usage	
注: 客户确认颜色的同时, 请注意用我公司提供的丝样进行必要的色牢度测试或咨询我公司相关信息, 得到确认后方可下订单生产。否则我公司恕不承担由此引起的任何责任。			
备注: Remark			

客户来样
St: 0.1%

宝丽迪送样
Match: 0.5%

Reflection Curve



Fastness Evaluation

Program	Type	Dosage	Standard			Sample			Color Shade				GS Variance	GS Stain
			L*	a*	b*	L*	a*	b*	DL*	Da*	Db*	DE*		
Rubbing ISO 105-X12	Stain	0.10%	94.51	0.01	3.2	94.24	0.04	3.15	-0.27 D	0.03 R	-0.05 B	0.28		5
		0.50%	94.51	0.01	3.2	94.09	0.03	3.25	-0.42 D	0.02	0.05 Y	0.42		5
Hot Pressing ISO 105-P01	150°C Variance	0.10%	52.05	-2.6	-5.15	52.67	-2.42	-5.11	0.62 L	0.17 R	0.04 Y	0.65	4.5	\
		0.50%	29.78	-2.56	-6.18	30	-2.44	-6.21	0.22 L	0.13 R	-0.02 B	0.25	5	\
	180°C Variance	0.10%	52.05	-2.6	-5.15	52.98	-2.46	-5.19	0.92 L	0.14 R	-0.04 B	0.94	4.5	\
		0.50%	29.78	-2.56	-6.18	30.78	-2.41	-6.11	1.00 L	0.16 R	0.08 Y	1.01	4.5	\
	210°C Variance	0.10%	52.05	-2.6	-5.15	53.11	-2.41	-4.98	1.05 L	0.19 R	0.17 Y	1.08	4.5	\
		0.50%	29.78	-2.56	-6.18	30.66	-2.42	-6.1	0.88 L	0.14 R	0.08 Y	0.89	4.5	\
	150°C Stain	0.10%	95.15	-0.43	1.14	94.07	-0.53	1.66	-1.08 D	-0.11 G	0.52 Y	1.2		5
		0.50%	95.15	-0.43	1.14	93.86	-0.57	1.5	-1.29 D	-0.15 G	0.36 Y	1.35		4.5
	180°C Stain	0.10%	95.15	-0.43	1.14	93.58	-0.62	1.59	-1.57 D	-0.19 G	0.46 Y	1.65		4.5
		0.50%	95.15	-0.43	1.14	90.28	-1.44	-1.11	-4.87 D	-1.02 G	-2.25 B	5.46		4
210°C Stain	0.10%	95.15	-0.43	1.14	91.6	-1.15	0.19	-3.55 D	-0.73 G	-0.95 B	3.75		4	
	0.50%	95.15	-0.43	1.14	87.06	-1.82	-3.91	-8.09 D	-1.39 G	-5.05 B	9.64		3	
Steaming	Variance	0.10%	52.05	-2.6	-5.15	51.23	-2.49	-4.97	-0.82 D	0.10 R	0.19 Y	0.85	4.5	\
		0.50%	29.78	-2.56	-6.18	29.9	-2.49	-5.8	0.11 L	0.08 R	0.38 Y	0.41	5	\
	Stain	0.10%	95.15	-0.43	1.14	93.07	-0.3	1.46	-2.08 D	0.12 R	0.32 Y	2.11		4.5
		0.50%	95.15	-0.43	1.14	88.13	-1.32	-0.2	-7.03 D	-0.90 G	-1.34 B	7.21		3.5
Soaping 60°C ISO 105-C06 C2S	Variance	0.10%	52.05	-2.6	-5.15	50.77	-2.46	-4.6	-1.28 D	0.13 R	0.55 Y	1.4	4	
		0.50%	29.78	-2.56	-6.18	28.91	-2.51	-5.65	-0.87 D	0.06 R	0.53 Y	1.02	4.5	\
	PET Stain	0.10%	94.4	-0.32	2.1	91.89	-0.61	1.55	-2.51 D	-0.30 G	-0.55 B	2.59		4.5
		0.50%	94.4	-0.32	2.1	92.45	-0.23	2.06	-1.95 D	0.09 R	-0.04 B	1.96		4.5



NINGBO PRECISE NEW MATERIAL TECHNOLOGY CO., LTD.

Conclusion

Based on the fastness test of Presol Black 38, it is found that the fastness of this dye is excellent, and its dispersibility can be further investigated according to different application requirements, so as to find the suitable application field.